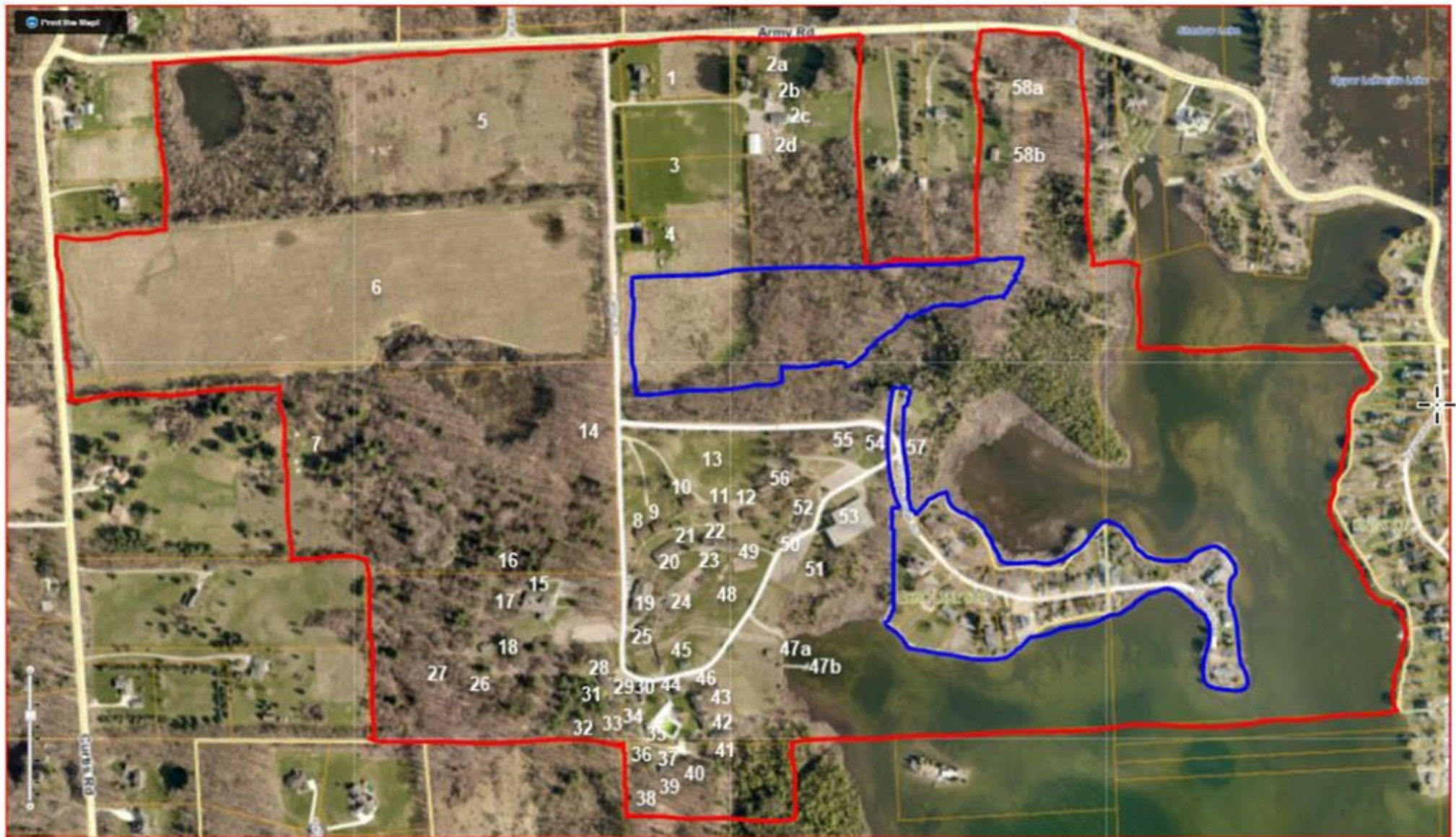


# Echo Grove Camp & Retreat Center Location Map



- |  |                           |                                     |                           |                                    |                                    |  |
|--|---------------------------|-------------------------------------|---------------------------|------------------------------------|------------------------------------|--|
| 1 - Yellow House (Beth Shean Retreat)    | 8 - Pine Cabin            | 18 - Shooting Range                 | 28 - Thunder Bay          | 38 - Mt. Charlie (Climbing Wall)   | 47b - Dock                         | 57 - Day Camp/Primitive Camping/Hiking Area      |
| 2a - Caretakers House                    | 9 - Oak Cabin             | 19 - Welcome Center/Main Office     | 29 - Housekeeping         | 39 - Zip Line                      | 48 - Foren Field (Soccer)          | 58a - Program/Activities Director's House        |
| 2b - Shop/Garage                         | 10 - Willow Cabin         | 20 - Seldon Lodge                   | 30 - Michigan - DYS House | 40 - High Ropes (Challenge Course) | 49 - Basketball Court              | 58b - Program/Activities Director's Storage Barn |
| 2c - Barn/Garage                         | 11 - Cedar Cabin          | 21 - Nursery                        | 31 - Creator's Place      | 41 - Superior Lodge                | 50 - Huron                         |  |
| 2d - Large Pole Barn                     | 12 - Elm Cabin            | 22 - Chapel                         | 32 - Low Ropes #2         | 42 - Magnolia                      | 51 - Kiddie Playground/Horseshoes  |  |
| 3 - Sports Field                         | 13 - Ballfield            | 23 - Playground                     | 33 - St. Clair            | 43 - Redwood                       | 52 - Shelter House                 |  |
| 4 - Camp Director's House (Green House)  | 14 - Nature Trail         | 24 - Froggies Snack Shack           | 34 - Whistle Stop         | 44 - Dogwood                       | 53 - Dining Hall/Gymnasium         |  |
| 5 - Activity Field North/Obstacle Course | 15 - Chamberlin Lodge     | 25 - Rockwell Pavilion              | 35 - Pool                 | 45 - Catherine Pavilion            | 54 - Outdoor Learning Center (OLC) |  |
| 6 - Activity Field South/Hayride         | 16 - Paintball Area       | 26 - Council Ring (Campfire Circle) | 36 - Volleyball Court     | 46 - Herival Pavilion              | 55 - Evangeline Pavilion           |  |
| 7 - Tee Pee Area                         | 17 - Trailer Camping Area | 27 - Low Ropes #1                   | 37 - Lakeville (DC Lodge) | 47a - Waterfront Pavilion          | 56 - Erie/Ontario                  |  |